



CULTURED STONE®

The Preferred Name In Stone™

Design Solutions®



Table of Contents

Welcome to Design Solutions®—a comprehensive guide to all of the innovative products, colors and textures Cultured Stone® has to offer. We invite you to take an in-depth look at the virtually endless ways Cultured Stone® products add to the natural beauty of your project. From textures to trim accessories to application ideas, everything you need to know about the products in our extensive collection is at your fingertips.

Design Solutions®	3-7	Architectural Stone Trim	54-65
Artistic Applications	8-15	Monticello® Trim Collection.....	58
Blended Textures.....	12	Electrical Box Stones.....	59
Grouting Styles.....	14	Capstones.....	60
Products	16-53	Hearthstones	61
Country LedgeStone.....	20	Quoins and Tuscan Lintels	62
Drystack LedgeStone	22	Trim Stones and Keystones	63
Pro-Fit® Alpine LedgeStone.....	24	Watertables/Sills	64
Pro-Fit® LedgeStone.....	26	Color Selection.....	65
Southern LedgeStone	28	Technical Data	66
Weather Edge LedgeStone	30		
Cobblefield®.....	32		
Coral Stone.....	34		
European Castle Stone.....	36		
Limestone.....	38		
Rockface.....	40		
Dressed Fieldstone	42		
Old Country Fieldstone	44		
River Rock	46		
Stream Stone.....	48		
Cultured Brick® Veneer.....	50		
Terra Craft® Landscape Products	52		

For the most current information on new products, visit www.culturedstone.com.

The product colors you see are as accurate as current photography and printing techniques allow. We suggest you look at product samples before you select colors.



Shown: Antique Red Used Brick.

The Preferred Name In Stone™ | 69

Design Solutions[®]



Shown: Bucks County Rockface.

The Preferred Name In Stone™ | 5





When you think of the highest quality stone veneer in the industry, one manufacturer immediately comes to mind—Cultured Stone. It's clear we know manufactured stone veneer, but we also know it takes more than quality products to remain an industry leader. It takes a solid reputation, innovative technology and creative solutions—all of which we offer.

We're a leader because we take manufactured stone veneer seriously. And taking stone seriously means meeting—and exceeding—the most stringent codes in the industry. On top of meeting strict codes, we strive to meet the toughest standards in the business. Yours.

An extensive variety of textures and colors. So creating countless unique signature environments with Cultured Stone® veneer is easy. We offer a wide variety of products so that, no matter what or where, you'll have everything you need to create virtually endless custom looks.



Shown: Bucks County Rockface.

Residential—The authentic-looking beauty of Cultured Stone® veneer gives you a multitude of ways to enhance any interior space. Equally at home outside, Cultured Stone® products give you the ability to create lasting curb appeal. Classic. Modern. Rustic. No matter what the design, there's a texture that will complement any setting.

Commercial—Enliven your structure with personality that attracts tenants and customers alike. Exteriors. Entryways. Or an entire brand look. Cultured Stone® veneer makes a lasting impression.

Outdoor Living—Create a reason to stay outside longer with Cultured Stone® veneer. Down-to-earth or upscale, our products give you more options for exceptional outdoor design.

Fireplaces—A centerpiece for quietly enjoying the peacefulness of solitude—the fireplace. Make any environment warm and welcoming with Cultured Stone® veneer.



Shown: Aspen Country LedgeStone with Aspen Dressed Fieldstone.

Cultured Stone® veneer's natural beauty goes hand-in-hand with creative inspiration. Our textures and colors can be used in virtually endless combinations. The result—countless opportunities to enhance an architectural or design project with a signature look.

Artistic Applications



Shown: Custom blend specially created for Radisson Fort McDowell Resort & Casino in Scottsdale, AZ.



Blended Textures

One way to create a custom look is to blend textures. It's the perfect way to grace an architectural or design project with a style not to be found anyplace else. By design, many of our textures blend well together for an effect that's truly unique. Take Bucks County Southern LedgeStone and Bucks County Dressed Fieldstone, for example. When blended together in whatever proportion you choose, the mixture produces a rugged texture fit for any informal setting. The highly compatible colors also accent and harmonize with other contemporary materials including stucco, wood, brick or vinyl.



80% Aspen Southern LedgeStone (CSV-430778)
with 20% Aspen Dressed Fieldstone (CSV-2040)



80% Bucks County Southern LedgeStone (CSV-2056)
with 20% Bucks County Dressed Fieldstone (CSV-2030)



Bucks County Used Brick (CB-418014)
with Bucks County European Castle Stone (PF-8113)



80% Caramel Country LedgeStone (CSV-20007)
with 20% Brandywine Dressed Fieldstone (CSV-2029)



80% Chardonnay Southern LedgeStone (CSV-2054)
with 20% Chardonnay Dressed Fieldstone (CSV-2042)



Chardonnay Used Brick (CB-418018)
with Chardonnay Dressed Fieldstone (CSV-2042)



80% Honey Country LedgeStone (CSV-20005)
with 20% Brandywine Dressed Fieldstone (CSV-2029)



80% Rustic Southern LedgeStone (CSV-2055)
with 20% Brandywine Dressed Fieldstone (CSV-2029)

The product colors you see are as accurate as current photography and printing techniques allow. We suggest you look at product samples before you select colors.



Grouting Styles

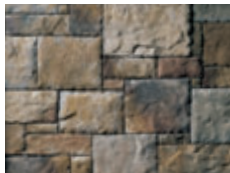
The perfect way to give one surface many different looks—grout. There are a variety of grouting styles. A standard $\frac{1}{2}$ " mortar joint which is approximately one fingertip or $\frac{1}{2}$ " in width. A tight-fitted joint which uses little to no mortar for a clean, tailored appearance. And an overgrouted or wide joint in which the mortar is liberally applied so it's nearly even with the stone face. In addition to widths, Cultured Stone® products also lend themselves to a variety of mortar colors.



Austin Cobblefield® (CSV-2035)
Complementing grout color with $\frac{1}{2}$ " mortar joints



Pheasant Pro-Fit® Alpine Ledge stone (CSV-420117)
Component stone with tight-fitted mortar joints



Bucks County European Castle Stone (PF-8113)
Tight-fitted mortar joints



Chardonay Old Country Fieldstone (CSV-368105)
Tight-fitted mortar joints



Chardonay Old Country Fieldstone (CSV-368105)
 $\frac{1}{2}$ " mortar joints



Chardonay Old Country Fieldstone (CSV-368105)
Wide mortar joints



Chardonay Old Country Fieldstone (CSV-368105)
Overgrouted mortar joints



Chardonay Old Country Fieldstone (CSV-368105)
Stones laid horizontally with overgrouted mortar joints



San Francisco Used Brick (CB-418959)
with San Francisco Cobblefield® (CSV-2037)
 $\frac{1}{2}$ " mortar joints

The product colors you see are as accurate as current photography and printing techniques allow. We suggest you look at product samples before you select colors.



Shown: Caramel
Drystack LedgeStone.

Cultured Stone® has everything you need for innovative interior and exterior residential, commercial and landscape designs. We have exceptional products and an unmatched variety of colors and textures that enable you to create awe-inspiring custom looks. And these are just a few of the reasons why we're The Preferred Name In Stone.™

Products



Shown: Mojave Pro-Fit LedgeStone.

The Preferred Name In Stone™ | 19



Shown: Chardonnay
Country Ledgestone.



Aspen Country Ledgestone (CSV-20008)



Black Rundle Country Ledgestone (CSV-391272)



Bucks County Country Ledgestone (CSV-368183)

Country Ledgestone

The extensive palette of installer-friendly **Country Ledgestone** differentiates one Ledgestone from another. It also provides a more subtle blend of color. For a bolder, more random look, pair with Cultured Stone® Dressed Fieldstone in matching or complementary colors.



Caramel Country Ledgestone (CSV-20007)



Chardonnay Country Ledgestone (CSV-20006)



Eucalyptus Country Ledgestone (CSV-20050)



Honey Country Ledgestone (CSV-20005)



Mojave Country Ledgestone (CSV-20042)



Red Rock Country Ledgestone (CSV-387453)



Shale Country Ledgestone (CSV-20044)



Walnut Country Ledgestone (CSV-20045)



White Oak Country Ledgestone (CSV-20046)

Stone sizes: $1\frac{1}{2}''$ – $6\frac{1}{2}''$ in height x $4\frac{3}{4}''$ – $22''$ in length.
Thickness: $1\frac{1}{8}''$ – $2\frac{1}{8}''$

Companion Architectural Stone Trim on pages 54–65.

Stated coverage areas for Country Ledgestone are based on $\frac{1}{8}''$ joints. Coverage will vary based on joint size, cutting or trimming preferences. All product samples above shown in $\frac{3}{4}''$ – $1'$ D' scale. All swatches above shown with tight-fitted joints.

The product colors you see are as accurate as current photography and printing techniques allow. We suggest you look at product samples before you select colors.



Drystack LedgeStone

The texture and variation of **Drystack LedgeStone** capture both light and shadow. Individual stones come in carefully-selected, pre-shaped incremental sizes to accommodate tight-fitted installation. Its rustic color palette blends well with contemporary roofing and wall finishes.



Caramel Drystack LedgeStone (CSV-2007)



Cedar Drystack LedgeStone (CSV-2011)



Chardonnay Drystack LedgeStone (CSV-2012)



Mist Drystack LedgeStone (CSV-2008)



Suede Drystack LedgeStone (CSV-2010)

Stone sizes: 1"–4" in height x 4"–16" in length.
Thickness: 1½"–2½".

Companion Architectural Stone Trim on pages 54–65.

Stated coverage areas for Drystack LedgeStone are based on tight-fitted joints to achieve a drystack look. All product samples above shown in ¾"=1' 0" scale.

The product colors you see are as accurate as current photography and printing techniques allow. We suggest you look at product samples before you select colors.



Pro-Fit® Alpine Ledgestone

Pro-Fit® Alpine Ledgestone provides a rustic outdoor look that's easy to install. Professionally fitted to form a precise yet rugged texture, this Ledgestone provides color and shadow creation for a variety of design opportunities.



Autumn Pro-Fit® Alpine Ledgestone (CSV-432963)



Chardonnay Pro-Fit® Alpine Ledgestone (CSV-420113)



Harvest Pro-Fit® Alpine Ledgestone (CSV-420114)



Mojave Pro-Fit® Alpine Ledgestone (CSV-432962)



Pheasant Pro-Fit® Alpine Ledgestone (CSV-420117)



Shale Pro-Fit® Alpine Ledgestone (CSV-432961)



Pheasant Pro-Fit® Ledgestone components

Component stone sizes: 4" in height x 8"-20" in length.
Thickness: 3/4"-2 1/4"

Companion Architectural Stone Trim on pages 54-65.

Stated coverage areas for Pro-Fit® Alpine Ledgestone are based on tight-fitted joints. All product samples above shown in 3/4" x 1' 0" scale.

The product colors you see are as accurate as current photography and printing techniques allow. We suggest you look at product samples before you select colors.



Pro-Fit® Ledgestone

Pro-Fit® Ledgestone is a practical way to achieve a custom look. Small-scale, low-relief stones are professionally fitted to form modular components of equal heights. The component pieces feature a patented interlocking mortar groove for a secure adhesion without grouted joints.



Autumn Pro-Fit® Ledgestone (PF-8015)



Gray Pro-Fit® Ledgestone (PF-8018)



Mojave Pro-Fit® Ledgestone (PF-8014)



Platinum Pro-Fit® Ledgestone (PF-8017)



Shale Pro-Fit® Ledgestone (PF-8016)



Southwest Blend Pro-Fit® Ledgestone (PF-8019)



Mojave Pro-Fit® Ledgestone components, supplied in a combination of lengths

Component stone sizes: 4" in height x 8"–20" in length.
Thickness: 1/2"–1 1/2"

Companion Architectural Stone Trim on pages 54–65.

Stated coverage areas for Pro-Fit® Ledgestone are based on tight-fitted joints. All product samples above shown in 3/4"=1' 0" scale.

The product colors you see are as accurate as current photography and printing techniques allow. We suggest you look at product samples before you select colors.



Shown: Fog
Southern LedgeStone.



1/2" Mortar joints

28 | Cultured Stone®



Tight-fitted joints

Southern Ledgestone

Southern Ledgestone offers a rugged and informal appeal with its rough texture and decided irregularity. Tight-fitted or with 1/2" mortar joints, Southern Ledgestone can be used to achieve a number of unique treatments.



Aspen Southern Ledgestone (CSV-430778)



Bucks County Southern Ledgestone (CSV-2056)



Chardonnay Southern Ledgestone (CSV-2054)



Fawn Southern Ledgestone (CSV-2026)



Fog Southern Ledgestone (CSV-2028)



Gray Southern Ledgestone (CSV-387448)



Rustic Southern Ledgestone (CSV-2055)



Walnut Southern Ledgestone (CSV-2027)



White Oak Southern Ledgestone (CSV-2033)

Stone sizes: 1/2"–6" in height x 4"–20" in length.

Thickness: 1"–2 3/4".

Companion Architectural Stone Trim on pages 54–65.

Stated coverage areas for Southern Ledgestone are based on 1/2" joints. Coverage will vary based on joint size, cutting or trimming preferences. All product samples above shown in 3/4"=1' 0" scale.

The product colors you see are as accurate as current photography and printing techniques allow.

We suggest you look at product samples before you select colors.



Weather Edge LedgeStone

The largest of the six Cultured Stone® LedgeStones, Weather Edge LedgeStone has a fully exposed, well-worn look. It offers the eroded texture of years past and a variety of colors typically found in weathered outcroppings.



Silverado Weather Edge LedgeStone (CSV-2061)



Wisconsin Weather Edge LedgeStone (CSV-2091)

Stone sizes: 1"-6" in height x 4"-24" in length.
Thickness: 1"-2 3/8"

Companion Architectural Stone Trim on pages 54-65.

Stated coverage areas for Weather Edge LedgeStone are based on 1/2" joints. Coverage will vary based on joint size, cutting or trimming preferences. All product samples above shown in 3/4"=1' 0" scale.

The product colors you see are as accurate as current photography and printing techniques allow. We suggest you look at product samples before you select colors.



Cobblefield®

The distinctive look of Cobblefield® is designed to emulate the architecture of rural 19th-century America. Its rugged refinement makes it equally at home in residential or commercial settings.



Austin Cobblefield® (CSV-2035)



Chardonnay Cobblefield® (CSV-387860)



Cypress Cobblefield® (CSV-20027)



Desert Blend® Cobblefield® (CSV-2066)



Gray Cobblefield® (CSV-2025)



Ohio Cobblefield® (CSV-2088)



San Francisco Cobblefield® (CSV-2037)



Texas Cream Cobblefield® (CSV-2083)

Stone sizes: 2"-8" in height x 4"-20" in length.
Thickness: 1"-2 3/4".

Companion Architectural Stone Trim on pages 54-65.

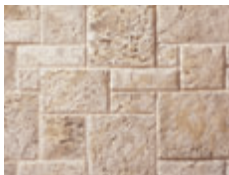
Stated coverage areas for Cobblefield® are based on 1/2" joints. Coverage will vary based on joint size, cutting or trimming preferences. All product samples above shown in 3/4"-1" 0" scale.

The product colors you see are as accurate as current photography and printing techniques allow. We suggest you look at product samples before you select colors.

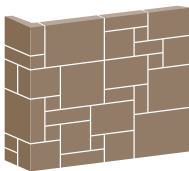


Coral Stone

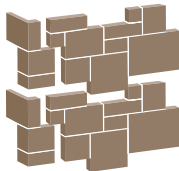
The delicate fossil patterns and unique surface characteristics of **Coral Stone** complement contemporary architecture and design beautifully. It can be installed as random ashlar or in a repeating pattern.



Fossil Reef Coral Stone (CSV-354399)



Random ashlar



Repeating pattern

Coral Stone can be installed as random ashlar or in a repeating pattern that allows for quick installation over large wall areas with a minimum of cutting. The 90° corners speed up installation even further.

Stone sizes: 4" x 4", 4" x 8", 4" x 12", 8" x 8", 8" x 12", 12" x 12" and 12" x 16"
Corner sizes: 4", 8", 12" heights with 4" and 8" lengths.
Thickness: 1 1/4" and sized for a 1/2" mortar joint.

Companion Architectural Stone Trim on pages 54–65.

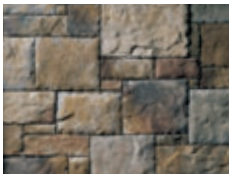
Stated coverage areas for Coral Stone are based on 1/2" joints. Coverage will vary based on joint size, cutting or trimming preferences. The product sample above shown in 3/4"=1' 0" scale.

The product colors you see are as accurate as current photography and printing techniques allow. We suggest you look at product samples before you select colors.



European Castle Stone

Beauty that's timeless and installation that's easy. European Castle Stone is as elegant as it is practical. Its patented interlocking mortar grooves create a tight-fitted, groutless appearance fit for stately exteriors and grand interiors alike.



Bucks County European Castle Stone (PF-8113)



Chardonnay European Castle Stone (PF-8112)



Golden Blend European Castle Stone (PF-8104)



Gray European Castle Stone (PF-8102)



Slate European Castle Stone (PF-8111)

Stone sizes: 2"–12" in height x 2"–16" in length.
Thickness: 3/4"–1 1/2"

Companion Architectural Stone Trim on pages 54–65.

Stated coverage areas for European Castle Stone are based on tight-fitted joints. All product samples above shown in 3/4"=1" 0" scale.

The product colors you see are as accurate as current photography and printing techniques allow. We suggest you look at product samples before you select colors.



Limestone

Molded from limestone quarried in the upper Midwest, our Limestone replicates this popular building material to a T. The rough, hand-split surface in a variety of colors lends itself to any number of possibilities.



Buckeye Limestone (CSV-2023)



Bucks County Limestone (CSV-2074)



Cedar Limestone (CSV-2044)



Chardonnay Limestone (CSV-2045)



Lake Erie Limestone (CSV-2006)



Suede Limestone (CSV-2046)

Stone sizes: $1\frac{1}{2}$ "–6" in height x 4"–16 $\frac{3}{4}$ " in length.
Thickness: $1\frac{1}{4}$ "–2 $\frac{1}{8}$ ".

Companion Architectural Stone Trim on pages 54–65.

Stated coverage areas for Limestone are based on $\frac{1}{2}$ " joints. Coverage will vary based on joint size, cutting or trimming preferences. All product samples above shown in $\frac{3}{8}$ "=1' 0" scale.

The product colors you see are as accurate as current photography and printing techniques allow. We suggest you look at product samples before you select colors.



Rockface

Highly versatile Rockface is a perfect fit for two of today's hottest looks—contemporary and Old World. Rockface not only lends itself to varying styles with 1/2" mortar joints, but also to various applications including homes, signage, landscaping and commercial environments.



Bucks County Rockface (CSV-387778)



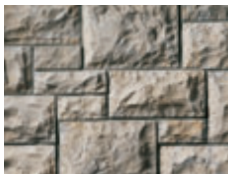
Dover Rockface (CSV-387761)



Granite Rockface (CSV-387807)



Romana Rockface (CSV-387753)



Stirling Rockface (CSV-387789)

Stone sizes: 4"–12" in height x 4"–16" in length.
Thickness: 1"–2 3/8"

Companion Architectural Stone Trim on pages 54–65.

Stated coverage areas for Rockface are based on 1/2" joints. Coverage will vary based on joint size, cutting or trimming preferences. All product samples above shown in 3/4"=1' 0" scale.

The product colors you see are as accurate as current photography and printing techniques allow. We suggest you look at product samples before you select colors.



Dressed Fieldstone

The rugged look of **Dressed Fieldstone** complements any natural environment. Its rich texture and range of color enhance a multitude of architectural designs.



Aspen Dressed Fieldstone (CSV-2040)



Brandywine Dressed Fieldstone (CSV-2029)



Bucks County Dressed Fieldstone (CSV-2030)



Chardonnay Dressed Fieldstone (CSV-2042)

Stone sizes: 2 1/2"–22"
Thickness: 1 1/4"–2 5/8"

Companion Architectural Stone Trim on pages 54–65.

Stated coverage areas for Dressed Fieldstone are based on 1/2" joints. Coverage will vary based on joint size, cutting or trimming preferences. All product samples above shown in 3/4"=1' 0" scale.

The product colors you see are as accurate as current photography and printing techniques allow. We suggest you look at product samples before you select colors.



Old Country Fieldstone

Old Country Fieldstone brings country charm to the 21st century with a wide variety of looks. Use a wide, overgrouted joint to deliver a random Tuscan look or a sturdy rural appeal. A tight-fitted horizontal emphasis provides a more formal look.



Chardonnoy Old Country Fieldstone (CSV-368105)



Chardonnoy Old Country Fieldstone (CSV-368105)
Overgrouted mortar joints



Chardonnoy Old Country Fieldstone (CSV-368105)
Stones laid horizontally with overgrouted mortar joints



Pheasant Old Country Fieldstone (CSV-430636)



Piedmont Old Country Fieldstone (CSV-368134)



Riviera Old Country Fieldstone (CSV-368117)



Romana Old Country Fieldstone (CSV-368168)



Tudor Old Country Fieldstone (CSV-368118)

Stone sizes: 1 1/2"–10" in height x 4"–16 1/2" in length.

Thickness: 1"–2 3/4"

Companion Architectural Stone Trim on pages 54–65.

Stated coverage areas for Old Country Fieldstone are based on 1/2" joints. Coverage will vary based on joint size, cutting or trimming preferences. All product samples above shown in 1/2"=1' 0" scale.

The product colors you see are as accurate as current photography and printing techniques allow. We suggest you look at product samples before you select colors.



River Rock

Randomly shaped River Rock has the warm and inviting look of stones rounded by years of tumbling in a northern forest riverbed. Comfortable and timeless, River Rock can be used to accentuate a variety of interior and exterior designs.



Earth Blend River Rock (CSV-2084)



Lake Tahoe River Rock (CSV-2057)



Lakeshore River Rock (CSV-2004)



Mackinac River Rock (CSV-391274)



Michigan River Rock (CSV-2060)



Whitewater River Rock (CSV-2053)

Stone sizes: 2"-14"
Thickness: 1"-2 3/4"

Companion Architectural Stone Trim on pages 54-65.

Stated coverage areas for River Rock are based on 1/8" joints. Coverage will vary based on joint size, cutting or trimming preferences. All product samples above shown in 3/4"=1" 0" scale.

The product colors you see are as accurate as current photography and printing techniques allow. We suggest you look at product samples before you select colors.



Shown: Summer Standard Stream Stone with Summer Standard Skimmers with companion Hearthstones.

Stream Stone

Stream Stone has a smooth, rounded texture that convincingly reproduces the look of worn stones found in rippling streams. It provides realistic color blends and can be used as an accent or to adorn an entire wall.



Spring Standard Stream Stone (CSV-2070)



Summer Standard Stream Stone (CSV-2071)



Winter Standard Stream Stone (CSV-2072)



Spring Standard Stream Stone (CSV-2070)
with 15% Spring Standard Skimmers (CSV-2069)



Summer Standard Stream Stone (CSV-2071)
with 15% Summer Standard Skimmers (CSV-2080)



Winter Standard Stream Stone (CSV-2072)
with 15% Winter Standard Skimmers (CSV-2081)

Stone sizes: 2"–12"

Skimmers average 2 1/2" in height x 3 1/2"–8" in length.

Stone thickness: 1/2"–3/4"

Skimmer thickness: 1/4"–3/8"

Companion Architectural Stone Trim on pages 54–65.

Stated coverage areas for Stream Stone are based on 1/2" joints. Coverage will vary based on joint size.

All product samples above shown in 3/4"=1" D" scale.

The product colors you see are as accurate as current photography and printing techniques allow.

We suggest you look at product samples before you select colors.



Shown: Chardonnay Used Brick and
Gray Standard Light Fixture Stones.



High Desert Used Brick (CB-418953) with overgrouted mortar joints
50 | Cultured Stone®



Bucks County Used Brick (CB-418014)
with Bucks County European Castle Stone (PF-8113)

Cultured Brick® Veneer

Warm and charming or industrial and modern. Cultured Brick® veneer puts a practical twist on a classic building material. As sturdy as it is versatile, its beautifully worn look works well in a variety of architectural designs. And it can be installed virtually anywhere, without the expense of additional foundation support.



Antique Red Used Brick (CB-4052)



Bucks County Used Brick (CB-418014)



California Drift® Used Brick (CB-4057)



Chardonnay Used Brick (CB-418018)



High Desert Used Brick (CB-418953)



Horton Bay Used Brick (CB-418956)



San Francisco Used Brick (CB-418959)



Antique Red Used Brick components

Stone sizes: 2 1/2" in height x 8" in length.
Corners sizes: 4" return.
Stone thickness: 1/2".

Companion Architectural Stone Trim on pages 54–65.

Stated coverage areas for Cultured Brick® are based on 1/2" joints. All product samples above shown in 3/8"=1' 0" scale.

The product colors you see are as accurate as current photography and printing techniques allow. We suggest you look at product samples before you select colors.



Terra Craft® Landscape Products

Water Wash Patio Pavers

Water Wash Patio Pavers are ideal for use as a patio or pathway. Looking like they have just been collected from a riverbed, they are randomly sized for ease of installation in a variety of outdoor living applications.



Spring Water Wash Patio Pavers (TC-3430)



Summer Water Wash Patio Pavers (TC-3432)



Tehama Water Wash Patio Pavers (TC-3407)



Winter Water Wash Patio Pavers (TC-3433)

Stone sizes: 6"–18"
Thickness: 1½"

All product samples above shown in ¾"=1" 0" scale.

5-Year Limited Warranty. Not intended for applications subject to vehicle traffic. See actual warranty for details, limitations and exclusions.

The product colors you see are as accurate as current photography and printing techniques allow. We suggest you look at product samples before you select colors.



Shown: Chardonny Country
LedgeStone and Taupe
Standard Light Fixture Stone.

It's the details that make the difference. And because we know what it takes—both inside and out—we offer a full line of Architectural Stone Trim accessories, including the Monticello® Trim Collection. An exclusive line of elegant trim pieces designed to complement a variety of existing Cultured Stone® and Cultured Brick® colors and textures. Cultured Stone® Architectural Stone Trim accessories do more than simply make a home noticeable. They make it memorable.

Architectural Stone Trim



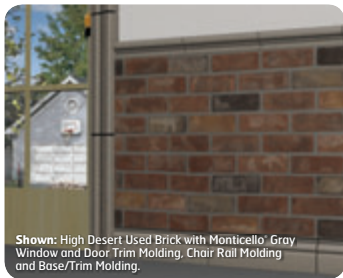
Shown: Chardonnay Drystack
Ledgestone with Marsh
Hearthstones on Heat & Glo
Dakota Outdoor Fireplace.

Monticello® Trim Collection

The **Monticello® Trim Collection** is designed to complement existing Cultured Stone® and Cultured Brick® products. It features trim profiles that are elegantly designed, easy-to-install accessories that provide an attractive balance of natural color variations.



Shown: Southwest Blend Pro-Fit® LedgeStone with Tawny Monticello® Keystone, Window and Door Trim Molding, Sills and Waterables/Sills.



Shown: High Desert Used Brick with Monticello® Gray Window and Door Trim Molding, Chair Rail Molding and Base/Trim Molding.



Left Window and Door Trim Molding shown in Tawny (CSV-426156).



Center Window and Door Trim Molding shown in Tawny (CSV-426158).



Keystone shown in Tawny (CSV-426082).



Right Window and Door Trim Molding shown in Tawny (CSV-426156).



Base/Trim Molding* shown in Mocha (CSV-439210).



Chair Rail Molding* shown in Mocha (CSV-439209).



Waterable/Sill* shown in Mocha (CSV-439211).



Left Sill shown in Monticello® Gray (CSV-426173).



Center Sill shown in Monticello® Gray (CSV-426161).



Right Sill shown in Monticello® Gray (CSV-426173).



Monticello® Trim Products available in all three colors.

Stone sizes:
 Base/Trim Molding, 16½" in length x 4½" in height x 1½" in width.
 Chair Rail Molding, 12½" in length x 2½" in height x 1½" in width.
 Keystone, 7" in length x 7" in height x 3" in width.
 Waterable/Sill, 18" in length x 4" in height x 2½" in width.
 Sill, 18" in length x 4½" in height x 4½" in width.
 Window and Door Trim Molding, 18" in length x 5" in height x 2½" in width.

*Best used with Cultured Brick® veneer and Cultured Stone® Pro-Fit® LedgeStone and European Castle Stone textures.

The product colors you see are as accurate as current photography and printing techniques allow. We suggest you look at product samples before you select colors.

Electrical Box Stones

Light Fixture Stones and Single and Double Receptacle Stones are easy to install and provide functional, aesthetic detail for virtually any Cultured Stone® veneer. Perfect for concealing electronics and wiring.



Shown: Chardonnay Country LedgeStone with Taupe Standard Light Fixture Stone.



Shown: Gray Pro-Fit® LedgeStone with Gray Single Receptacle Stone.



Gray Standard Light Fixture Stone
(CSV-413565)



Gray Large Light Fixture Stone
(CSV-425336)



Gray Single Receptacle Stone
(CSV-413771)



Gray Double Receptacle Stone
(CSV-432564)



Mocha Standard Light Fixture Stone
(CSV-439205)



Mocha Large Light Fixture Stone
(CSV-439206)



Mocha Single Receptacle Stone
(CSV-439207)



Mocha Double Receptacle Stone
(CSV-439208)



Taupe Standard Light Fixture Stone
(CSV-413564)



Taupe Large Light Fixture Stone
(CSV-425335)



Taupe Single Receptacle Stone
(CSV-413770)



Taupe Double Receptacle Stone
(CSV-432563)

Stone sizes:

Standard Light Fixture Stone, 10" in height x 8" in length x 1 1/2" in width; Large Light Fixture Stone, 15" in height x 9 1/2" in length x 1 1/2" in width; Single Receptacle Stone, 8" in height x 6" in length x 1 1/2" in width; Double Receptacle Stone, 8" in height x 8" in length x 1 1/2" in width.

The product colors you see are as accurate as current photography and printing techniques allow.

We suggest you look at product samples before you select colors.

Capstones

Capstones can help provide protection—and a beautifully finished look—to walls, columns and piers. For exterior walls or piers, a sloped cap that extends beyond the stone facing is recommended. In cold climate regions, using corner or flat pieces as wall caps is not recommended.



Shown: San Francisco Cobblefield with Buckskin Wall Caps, Pier Caps and Watertables.



Shown: Fog Southern LedgeStone with Gray Wall Caps and Pier Caps.



24" x 24" Chiseled Pier Cap shown in Champagne (CSV-1235). Also available in 32" x 32"



24" x 24" Flagstone Pier Cap shown in Buckskin (CSV-1210). Also available in 32" x 32"



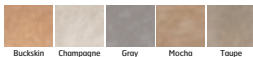
12" x 20" Chiseled Sloped Wall Cap shown in Taupe (CSV-1227). Also available in 16" x 20"



12" x 20" Flagstone Sloped Wall Cap shown in Champagne (CSV-1200). Also available in 16" x 20"



10" x 20" Flat Textured Capstones shown in Champagne (CSV-441063). Also available in 6" x 20" and 12" x 20"



Capstones available in all five colors. Flat Textured Capstones not available in Buckskin.

Thickness of all capstones: 2"

Note: Flat Textured Capstones can be used for fireplace hearths.

Hearthstones

Cultured Stone® Hearthstones match or complement every Cultured Stone® manufactured stone veneer color and texture. The perfect way to create interior synergy.



Blond Hearthstone (CSH-3089)



Chardonnay Hearthstone (CSH-391280)



Cream Hearthstone (CSH-3097)



Granite Hearthstone (CSH-391279)



Gray Hearthstone (CSH-3091)



Marsh Hearthstone (CSH-3084)



Silver Sand Hearthstone (CSH-3099)

Note: Hearthstones (other than Water Wash Pavers) are not suitable for exterior use.



Spring Water Wash
Patio Pavers (TC-3430)



Summer Water Wash
Patio Pavers (TC-3432)



Winter Water Wash
Patio Pavers (TC-3433)

Stone sizes:
Hearthstone, 19" in height x 20" in length.
Water Wash Patio Paver, 6"–18". Thickness: 1½"

The product colors you see are as accurate as current photography and printing techniques allow. We suggest you look at product samples before you select colors.

Quoins and Tuscan Lintels

Use **Quoins** to accent exterior wood, stucco, brick or stone finishes. They can blend in subtly or boldly stand out. The choice is yours.

Tuscan Lintels are used to boldly trim out headers over windows and doorways. They're the perfect way to take an exterior design to a whole new level.



Shown: Champagne Quoins.



Shown: Ramana Old Country Fieldstone with Buckskin Tuscan Lintel.



Buckskin Quoin (CSV-2896)



Champagne Quoin (CSV-2892)



Buckskin Tuscan Lintel (CSV-373098)



Champagne Tuscan Lintel (CSV-373099)



Gray Quoin (CSV-2825)



Mocha Quoin (CSV-444964)



Gray Tuscan Lintel (CSV-373100)



Mocha Tuscan Lintel (CSV-444965)



Taupe Quoin (CSV-2897)



Taupe Tuscan Lintel (CSV-373101)

Stone sizes:

Quoin (nominal), 8" in height x 8" in length x 12" in width.

Tuscan Lintel, 6" in height x 22" in length x 2 3/4" in width.

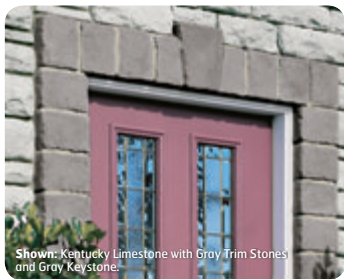
The product colors you see are as accurate as current photography and printing techniques allow. We suggest you look at product samples before you select colors.

Trim Stones and Keystones

Trim Stones and Keystones are available in a range of carefully chosen colors designed to complement, blend or contrast with virtually any stone and/or stucco treatment. They can also be cut or shaped to conform to any arch radius, offering tremendous design flexibility.



Shown: Chardonnay Dressed Fieldstone with Taupe Trim Stones.



Shown: Kentucky Limestone with Gray Trim Stones and Gray Keystone.



Buckskin Trim Stone (CSV-1262)



Champagne Trim Stone (CSV-1263)



Buckskin Keystone (CSV-1268)



Champagne Keystone (CSV-1269)



Gray Trim Stone (CSV-1266)



Mocha Trim Stone (CSV-444967)



Gray Keystone (CSV-1272)



Mocha Keystone (CSV-444966)



Taupe Trim Stone (CSV-1267)



Taupe Keystone (CSV-1273)

Stone sizes:
Trim Stone (nominal), 6" in height x 8" in length x 1 7/8" in width.
Keystone (nominal), 5 1/2" in height x 8" in length x 10" in width. Thickness: 1 7/8"

The product colors you see are as accurate as current photography and printing techniques allow. We suggest you look at product samples before you select colors.

Watertables/Sills

Watertables/Sills are as functional as they are attractive. Specifically designed for use at the top of a stone wainscot or a variety of sill applications, they have the right pitch and a drip edge to accommodate water runoff.



Buckskin Watertable/Sill (CSV-1371)



Champagne Watertable/Sill (CSV-1370)



Gray Watertable/Sill (CSV-1372)



Mocha Watertable/Sill (CSV-444968)



Taupe Watertable/Sill (CSV-1375)



The pitch and drip edge

Color Selection

The legwork is done. We've designed our trim accessories to complement our textures perfectly. Use the chart below as a guide to selecting the Architectural Stone Trim that best harmonizes with the Cultured Stone® products you have chosen.

Country LedgeStone	Capstones, Keystones, Quoins, Trim Stones, Tuscan Lintels and WaterTables/Sills	Heartstones	Monticello® Trim Collection
Aspen	Buckskin, Taupe	Gray, Marsh	Tawny
Black Bundle	Gray, Taupe	Gray	Tawny
Bucks County	Gray, Taupe	Gray, Marsh	Monticello® Gray, Tawny
Caramel	Buckskin, Taupe	Blond, Marsh	Tawny
Chardonmay	Buckskin, Taupe	Chardonmay, Marsh	Tawny
Eucalyptus	Buckskin, Gray, Taupe	Marsh, Silver Sand	Monticello® Gray, Tawny
Honey	Buckskin, Mocha	Blond, Marsh	Mocha, Tawny
Mojave	Buckskin, Mocha, Taupe	Blond, Marsh	Mocha, Tawny
Red Rock	Buckskin, Taupe	Marsh	Tawny
Shale	Gray, Taupe	Marsh	Monticello® Gray, Tawny
Walnut	Mocha, Taupe	Drift*	Mocha, Tawny
White Oak	Buckskin, Champagne, Taupe	Cream	Monticello® Gray, Tawny
Drystack LedgeStone			
Caramel	Buckskin, Taupe	Blond, Marsh	Tawny
Cedar	Buckskin, Taupe	Marsh	Tawny
Chardonmay	Buckskin, Taupe	Chardonmay, Marsh	Tawny
Hist	Gray, Taupe	Silver Sand	Monticello® Gray, Tawny
Suede	Gray, Taupe	Marsh	Monticello® Gray, Tawny
Pre-Fit Alpine LedgeStone			
Autumn	Buckskin, Mocha, Taupe	Blond, Marsh	Mocha, Tawny
Chardonmay	Buckskin, Champagne, Taupe	Chardonmay	Tawny
Harvest	Buckskin, Taupe	Silver Sand	Tawny
Mojave	Buckskin, Mocha, Taupe	Blond	Mocha, Tawny
Pheasant	Buckskin, Gray	Gray	Monticello® Gray
Shale	Gray, Taupe	Gray	Monticello® Gray, Tawny
Pre-Fit LedgeStone			
Autumn	Buckskin, Mocha, Taupe	Blond, Marsh	Mocha, Tawny
Gray	Gray	Gray	Monticello® Gray
Mojave	Buckskin, Mocha, Taupe	Blond	Mocha, Tawny
Platinum	Champagne, Gray	Gray, Winter	Monticello® Gray
Shale	Gray, Taupe	Gray	Monticello® Gray, Tawny
Southwest Blend	Buckskin, Champagne, Taupe	Cream, Silver Sand	Tawny
Southern LedgeStone			
Aspen	Buckskin, Taupe	Gray, Marsh	Tawny
Bucks County	Gray, Taupe	Gray, Marsh	Monticello® Gray, Tawny
Chardonmay	Buckskin, Taupe	Chardonmay, Marsh	Tawny
Fawn	Buckskin, Mocha, Taupe	Drift*	Mocha, Tawny
Fog	Buckskin, Gray, Taupe	Silver Sand	Monticello® Gray, Tawny
Gray	Gray	Gray	Monticello® Gray
Rustic	Buckskin, Taupe	Blond, Marsh	Tawny
Walnut	Mocha, Taupe	Drift*	Mocha, Tawny
White Oak	Buckskin, Champagne, Taupe	Cream	Tawny
Weather Edge LedgeStone			
Silverado	Buckskin, Gray, Taupe	Gray	Monticello® Gray, Tawny
Wisconsin	Buckskin	Blond, Marsh	Tawny
Cobblefield®			
Autumn	Buckskin, Champagne	Cream	Tawny
Chardonmay	Buckskin, Taupe	Chardonmay, Marsh	Tawny
Cypress	Buckskin, Gray, Taupe	Cream, Gray	Monticello® Gray, Tawny

Cobblefield® (Cont.)	Capstones, Keystones, Quoins, Trim Stones, Tuscan Lintels and WaterTables/Sills	Heartstones	Monticello® Trim Collection
Desert Blend	Buckskin, Mocha, Taupe	Drift*	Mocha, Tawny
Gray	Champagne, Gray	Gray	Monticello® Gray
Ohio	Buckskin, Champagne, Gray	Cream, Silver Sand	Monticello® Gray
San Francisco	Buckskin, Gray, Taupe	Gray	Monticello® Gray, Tawny
Teas Cream	Buckskin, Champagne	Cream, Silver Sand	Tawny
Corral Stone			
Fossil Reef	Champagne, Taupe	Cream	Tawny
European Castle Stone			
Bucks County	Gray, Taupe	Gray, Marsh	Monticello® Gray, Tawny
Chardonmay	Buckskin, Taupe	Chardonmay, Marsh	Tawny
Golden Blend	Buckskin, Champagne	Cream	Monticello® Gray, Tawny
Gray	Gray	Gray	Monticello® Gray
Slate	Buckskin, Gray, Taupe	Gray	Monticello® Gray, Tawny
Limestone			
Buckeye	Champagne	Marsh	Tawny
Bucks County	Gray, Taupe	Gray, Marsh	Monticello® Gray, Tawny
Cedar	Buckskin, Taupe	Marsh	Tawny
Chardonmay	Buckskin, Champagne, Taupe	Chardonmay, Marsh	Tawny
Lake Erie	Champagne, Taupe	Marsh	Tawny
Suede	Gray, Taupe	Marsh	Monticello® Gray, Tawny
Rockface			
Bucks County	Gray, Taupe	Gray, Marsh	Monticello® Gray, Tawny
Dover	Buckskin, Champagne	Cream	Tawny
Granite	Champagne, Gray	Granite, Gray	Monticello® Gray
Romano	Buckskin, Taupe	Marsh	Tawny
Stirling	Gray, Taupe	Gray	Tawny
Dressed Fieldstone			
Aspen	Buckskin, Taupe	Gray, Marsh	Tawny
Brandywine	Buckskin, Mocha, Taupe	Marsh	Mocha, Tawny
Bucks County	Gray, Taupe	Gray, Marsh	Monticello® Gray, Tawny
Chardonmay	Buckskin, Taupe	Chardonmay, Marsh	Tawny
Old Country Fieldstone			
Chardonmay	Buckskin, Champagne, Taupe	Chardonmay, Marsh	Monticello® Gray, Tawny
Pheasant	Gray	Gray	Monticello® Gray
Piedmont	Champagne, Gray, Mocha, Taupe	Blond, Marsh	Mocha, Monticello® Gray, Tawny
Riviera	Gray, Taupe	Napa*	Monticello® Gray, Tawny
Romano	Buckskin, Taupe	Blond	Monticello® Gray, Tawny
Tudor	Buckskin, Gray, Taupe	Gray, Marsh	Monticello® Gray, Tawny
River Rock			
Earth Blend	Buckskin, Mocha, Taupe	Marsh	Mocha, Tawny
Lake Tahoe	Gray, Taupe	Gray	Monticello® Gray, Tawny
Lakeshore	Buckskin, Taupe	Silver Sand, Spring	Tawny
Mockacin	Champagne, Gray	Gray	Monticello® Gray
Michigan	Champagne, Gray	Granite	Monticello® Gray
Whitewater	Champagne, Gray	Granite, Gray	Monticello® Gray
Stream Stone			
Spring	Buckskin, Champagne	Spring	Monticello® Gray
Summer	Buckskin, Champagne, Taupe	Summer	Tawny
Winter	Champagne, Gray, Taupe	Winter	Monticello® Gray, Tawny

*Special order.

Technical Data

The **Cultured Stone® collection of manufactured stone veneers** is engineered to meet or exceed specifications for all major code approvals. Manufacturers who offer “just like” or a so-called “equivalent” to Cultured Stone® manufactured stone veneer products should be asked to document claims of test results and research reports.

Complete copies of these Cultured Stone® manufactured stone veneer building code evaluation reports, research reports, approvals and listings are available upon request:

- ICC-ES ESR-1364
- Florida Product Approval FL4842
- Tested and listed by Underwriters Laboratories, Inc.
- City of Los Angeles Research Report RR23744
- HUD Materials Release No. 1316
- Texas Department of Insurance—Product Evaluation Report, EC-21
- BMEC Authorization

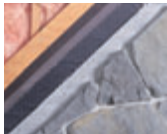
Note: Local building codes may vary; always check with your local building code authority prior to installation.

Results of tests conducted by an independent testing agency confirm that the Cultured Stone® collection of manufactured stone veneers conforms to or exceeds the following test requirements as specified in ICC Evaluation Service Acceptance Criteria 51 for Precast Stone Veneer:

Materials

Cement	ASTM C 150
Sand	ASTM C 144 or C 33
Aggregate	ASTM C 33 or C 330 (except gradation)

Typical Installations



Wood frame



Masonry or concrete



Rigid foam insulation



Corner preparation

For complete installation instructions, detailed drawings and more, visit www.culturedstone.com.



CULTURED STONE®

The Preferred Name In Stone™



Only genuine Cultured Stone® brand products have a CSV® indicia embossed on the edge.



ICC-Evaluation
Service E5 ESR-1364



Underwriters
Laboratories

Also, City of Los Angeles Research
Report, HLD Materials Release,
BMEC Authorization

The Cultured Stone® collection of stone veneer products is engineered to meet or exceed specifications for all major code approvals. They're also virtually maintenance-free and backed by a 50-Year Limited Warranty. See actual warranty for details, limitations and exclusions.

For additional information on Cultured Stone® products and services,
visit www.culturedstone.com or call 1-800-255-1727.



CULTURED STONE®

The Preferred Name In Stone®

OWENS CORNING CULTURED STONE, LLC
Pub. No. 61121-C. Printed in U.S.A. June 2007.
©2007 Owens Corning.

Cultured Stone® and Cultured Brick® are registered
trademarks of Owens Corning.

Overhead, horizontal or sloped applications are not included in our building code evaluation reports or acceptances. These applications often require special approval/inspections by local building inspectors. Contact your architect or engineer for assistance designing these installations.

The product colors you see are as accurate as current photography and printing techniques allow. We suggest you look at product samples before you select colors.

